

# 2021 NORTHWEST OHIO URBAN FORESTRY CONFERENCE

*Road Trip Edition*



TOUR DETAILS INSIDE

*We'll update as we add adventures*

## WE'RE HITTING THE ROAD!

We're not letting an international pandemic get in our way of learning **together**. Join us on any or all of our caravan tours to see what our villages, cities, friends, and neighbors are doing. We'll be seeing innovative technologies, new and historical ways to address challenges, champion trees, and some beautiful sites on and off the beaten path. **Watch your emails as we add more dates.**

### *About the Tours*

Free!

RSVPs appreciated ([click here](#))

- We need to print tour guides for everyone
- Last minute decisions are ok too

Prefer the Vaccinated

- If not, protect others by masking and distancing

**Encourage** your local officials, engineers, planners, arborists, and green industry professionals to come

3 ISA CEUs per tour

Half day, **caravan** tours

- Carpooling with your friends is nice
- Stops/routes subject to change
- Restroom & catch up locations built into tours

Interesting gathering locations

- Arrive early, walk around, and explore

Interesting final stops

- Picnic together (bring your lunches) or eat out (2 tours)
- Stick around & explore



## Fall Color & History Tour

Historic Parks & Trees, Downtowns, & Sandusky River Drive

October 21, 2021

## WHAT WE'LL SEE

*Start at Upper Sandusky's Harrison Smith Park - End at Spiegel Grove in Fremont*

**8:30-9:10** Arrive anytime at Harrison Smith Park - 525 E Wyandot Ave, Upper Sandusky (Lot on west side near play yard)

- **Come early and explore Harrison Smith Park:** Located on nearly 33 acres of picturesque, historic land, it is a NW Ohio gem. Famous for its annual *Winter Fantasy of Lights*, this land was also the seat of government for the Wyandotte Nation with their Council House adjacent to the current park. Harrison Smith Park was also known for a beloved elm tree that has it's own memorial marker today.

**9:15-9:25** Gather in the shelter house by play yard for a brief welcome, review maps, and cover the day's logistics

**9:30** Hit the Road!

- **Stop 1:** Upper Sandusky is part of the Shawshank Trail. We'll stop at the courthouse where Andy Dufresne's courtroom scene was filmed. Check out the city's beautiful downtown and their Japanese tree lilacs.
- **Drive through downtown Tiffin.** A tree species mix in a bit of transition.
- **Stop 2:** Rotary Club Park, Seneca County Veterans Memorial, and All Patriots Memorial lie in the vicinity of the former Fort Ball. Strategically placed along travel routes and the Sandusky River, the space today has beautiful riverside walkways, memorials, and trees. The All Patriots Memorial features a World Trade Center beam, and trees play a part in it's design.
- **Drive along the scenic Sandusky River.** Nice views and calming tree canopy. We'll make some stops if we have time.
- **Stop 3:** Ballville Dam was built on the Sandusky River in 1913 for hydroelectric power generation and was approximately 407 feet long and 34.4 feet high. The impounded section of the river extended upstream from the dam 2.1 miles-the surface area of 89+ acres. The dam was removed in 2018 in an effort to restore to its natural free flowing form, becoming one of the largest and most important ecosystem restoration project ever undertaken in Ohio.
- **Stop 4:** Spiegel Grove is the name given to the estate of 19th U.S. President Rutherford B. Hayes. It was so named for the large puddles of rainwater that collect beneath the towering trees following a storm. "Spiegel" is the German word for mirror - an accurate description for these nature-made reflecting pools. We'll take a few minutes to see some of the grounds and to visit Ohio's first Survivor Tree from the Oklahoma City Memorial.

**12:30/1:00** Bring your lunch money. We'll finish this tour with lunch at The Garrison, a cool, downtown eatery. Feel free to return to Spiegel Grove to visit more trees or visit the museum. Fremont has nice parks and historic neighborhoods to explore too.





## Lake Life

Parks, Carvings, & Pollinators

September 23, 2021

## WHAT WE'LL SEE IN 2022

*Start at St. Marys Memorial Park - End at Fort Recovery Community Park*

**8:30-9:10** Arrive anytime at St. Marys Community Library Lot - 140 S Chestnut St, St Marys

- **Get there early and explore Memorial Park**, a 3-acre landscaped oasis in the center of St. Marys' Uptown business district. Dedicated to WWI veterans, it's home to the Belle of St. Marys Canal Boat, a covered bridge, a canal lock, and wonderful walking paths.

**9:15-9:25** Gather in the gazebo for a brief welcome, review maps, and cover the day's logistics

**9:30** Hit the Road!

- **Stop 1:** We'll walk half a block to Heritage Park. This downtown space displays the heritage of St. Marys and reflect on their international relationships with Lienen, Germany and Awaji City, Japan. Three murals reflecting the history of St. Marys were completed in 2006.
- **Drive through downtown St. Marys.** Established zelkovas and transitioning in new trees.
- **Drive through West Grand Lake St Marys State Park.** Nice baldcypress grove.
- **Drive through East Grand Lake St Marys State Park & City of Celina Parks.** Excellent lake views & rec space.
- **Stop 2:** Coldwater Memorial Park is a sprawling 1-square mile recreational hub that offers fun and relaxation for the whole family. Not many towns of similar size can compete with the picturesque park. In addition to beautiful tree canopy, it is home to an amazing series of sculptures carved from trees. See St. Francis and an emblem for all U.S. military branches. Turns out I have a personal connection to Coldwater...surprise!
- **Stop 3:** What do you do with a nice woods south of town? We'll take a little hike through the Coldwater Nature Preserve.
- **Stop 4:** Fort Recovery Community Park is a hub of activity for this little village at the mouth of the Wabash River. In 2015 the Tree Commission worked with the Division of Forestry to develop a planting design for the park. In 2017, they contributed to the park's pollinator garden with the addition of pollinator tree species around the perimeter. It's an excellent showcase for their citizens and park visitors. We'll visit the pollinator garden and see how their vision is coming to fruition throughout the park.

**12:30/1:00** We'll finish with a picnic lunch (bring your own) together in one of the shelter houses. You're encouraged to explore more of the park and/or visit the Fort Recovery State Museum grounds and Monument the after lunch.



## Trees in History & Our Future

Master Planting Design, The Great Maumee River Watershed,  
Sacred Spaces, & Healthy Trees in Difficult Sites

Date TBD

## WHAT WE'LL SEE IN 2022

*Start at Napoleon Master Planting Design - End at Bryan's Downtown Structural Soil*

**11:30-12:10** Arrive anytime at the Napoleon Public Library – 310 W Clinton St, Napoleon (overflow parking along Webster St.)

- **Stretch and enjoy a leisurely walk through one of Napoleon's historic neighborhoods:** Feel free to walk south to West Washington Street to see their planting design up close – one of the first installations in NW Ohio.

**12:15-12:25** Gather in the library lot for a brief welcome, review maps, and cover the day's logistics

**12:30** Hit the Road!

- **Drive West Washington Street.** West Washington Street is an excellent example of what a well-designed and implemented street tree population will look like. It was completely rebuilt in 2012-2013. Napoleon had just hosted the second round of Tree Commission Academy classes and utilized the Master Planting Design (MPD) process in their construction program. The city has continued to utilize the Urban Site Index (USI) and MPD in their urban forestry activities.
- **Drive along the scenic Maumee River and former Maumee-Erie Canal.** Nice views and calming tree canopy.
- **Stop 1:** Riverside Park has nice grant-funded tree plantings with young tree training.
- **Stop 2:** Historic Riverside Cemetery has a beautiful population of mature oaks and many other species. Feel how the trees play a role in the comfort of loved ones in these sacred spaces. You'll have a chance to explore on foot or in your car.
- **Drive through downtown Defiance.** Gingkoes and Japanese Tree Lilacs in traditional tree pits.
- **Stop 3:** Pontiac Park has a memorial for what is said to have been the largest apple tree ever recorded. View the site of Fort Defiance at the merging of the Auglaize & Maumee Rivers. Great view!
- **Stop 4:** View parking lot [Silva Cell](#) installation and neat baldcypress grove at Diehl Park. Silva Cells provide stormwater management and quality growing medium for trees under pavement and in high-use areas.
- **Stop 5:** Visit downtown Bryan's Structural Soil installation. [Structural Soil](#) is a medium developed by Cornell University to create underground growing space for tree roots in commercial districts, parking lots, and streets. It's a neat story of how the community came together to do what was best for everyone.

**3:30/4:00** Hoping to wrap up today at Father John's Microbrewery. Cool gardens and neat story. You're going to want to check this place out. Will have more details as we get closer to the program.

---

## PREVIOUS TOURS

*2021 Northwest Ohio Urban Forestry Conference - Road Trip Edition*

Thank you to everyone for joining us to explore and learn together. I especially appreciate the first tour group for letting me experiment with them. Their patience and feedback was helpful in planning our next adventures.

As we finish a tour, I'll add it to this next section so that we can keep a record of our fun in 2021.

Although I **hope that you will join us**, I understand that not everyone's schedule works for every tour. So, I'll be sharing the tour guides with everyone if you'd like to do them on your own, with your tree commissions & staff, or with your families/friends/neighbors.

There are so many amazing and "hidden" gems throughout NW Ohio, that it's difficult to narrow down our sites. I encourage you to visit your favorite map program/app (I'm a fan of Google Maps) and look for other locales along these routes. Get off the main routes through communities. Enjoy their street trees and parks, or be thankful for the wonderful ones you have. Look for natural areas and historic sites. Download [DETOUR](#) - ODNR's new trail app and use it. Stop and eat at local eateries - you never know what neat people you'll meet.

Most importantly, HAVE FUN!

It's an honor serving you and offering you continued opportunities to learn and build our NW Ohio Urban Forestry Community. You're doing amazing things. It's legacy work. Keep it up. Let me know what I can do to assist you.

*Stephanie*







## Bugs, Walks, Sacred Spaces, and Downtown Trees

June 22, 2021

### WHAT WE SAW

*Start in Bowling Green - End in Grand Rapids*

[Click Here for Link to Tour Booklet](#)

**8:30-9:15** Arrive anytime and enjoy Bowling Green City Park - 520 Conneaut - Park in new Veteran's Hall Lot

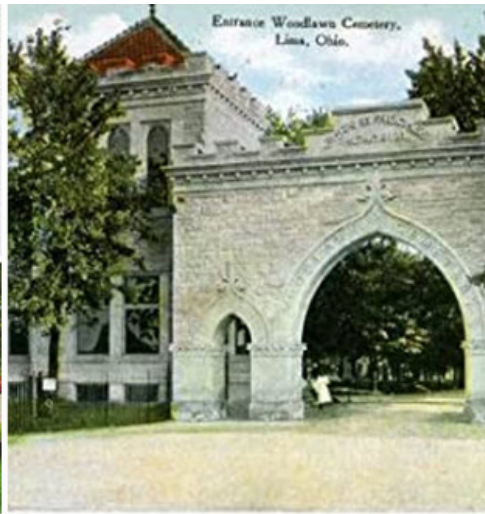
- Bowling Green has been successfully managing gypsy moth for over 20 years. See their burlap banding to control the damaging larval stages. Hopefully the banding partnered with a couple of insecticide treatments earlier in the season and the soil borne fungus, entomophaga, introduced by OSU Extension many years ago will significantly limit this larval counts and their damage.

**9:15-9:20** Gather in the parking lot for a brief welcome & hand out maps with site descriptions and histories

**9:30** Hit the Road!

- **Stop 1:** We'll walk a couple of blocks south of City Park to see some of Bowling Green's rubber sidewalk installations. Visitors unable to walk the distance will be able to drive to the site.
- **Stops 2-3:** Drive through two historic cemeteries in Waterville and Whitehouse. One is more traditional with large trees and a variety of species. The other has a series of uniquely sculpted arborvitae. Feel how the trees play a role in the comfort of loved ones in these sacred spaces.
- **Stop 4:** Whitehouse recently installed Silva Cells in their downtown. This innovative technology was designed to offer underground stormwater storage capacity and align the service life of valuable shade trees with the hardscape in highly developed urban spaces.
- **Stop 5:** Historic Grand Rapids was rebuilt several years ago using traditional sidewalk cutouts. Only a few species will survive more than a decade in these tough environments. The village did their homework and planted ginkgoes which are doing well and add to the charm of their shopping district.

**12/12:30** We'll wrap today's tour with a picnic lunch with one of the most beautiful views along the Maumee River. It's a favorite spot for photographers and bald eagle watchers. Bring your lunch or purchase takeout at one of the local eateries. Stick around & explore Grand Rapids shops, their canal trail, the grain mill, and Mary Jane Thurston State Park.



**Lima, Here We Come!**  
 Trees for the mind, body, & spirit + a little oak wilt  
 July 14, 2021

## WHAT WE SAW

*Start at the Lima Children's Garden - End at Hermon Woodlands Metro Park*

[Click Here for Link to Tour Booklet](#)

**8:30-9:15** Arrive anytime at the Lima Public Library - 650 W. Market - Park in rear lot along High Street

- **Explore the Lima Children's Garden:** From its conception in 1996, this space in downtown Lima has grown to become an informal educational center. With more than 30 mini-themed gardens and featuring art inspired by local children, the garden makes a perfect activity for families and field trips.

**9:15-9:25** Gather in the gazebo for a brief welcome, review maps, and cover the day's logistics. Group picture.

**9:30** Hit the Road!

- **Stop 1: \*NEW\*** Studies increasingly show that trees and greenspace improve the health and well-being of human beings. We'll walk a half block to St. Rita's Hospital to see their rooftop garden - one of Lima's best kept secrets! **Masks required when walking through hospital.**
- **Stop 2:** We'll proceed through the west side of the campus and enjoy their beautiful grounds developed to create a comfortable outdoor space for patients, visitors, and staff. It also functions to manage stormwater and provide a buffer between busy streets and the medical center.
- **Stop 3:** Historic Faurot Park was a gift to Lima on February 4, 1904. Present day Faurot Park is 89 acres of green space which lends itself to a quiet picnic or a day of recreational enjoyment. The city has also partnered with local conservation groups to install excellent examples of signage about their effort to protect the Ottawa River Watershed.
- **Stop 4:** The Woodlawn Cemetery was founded in 1873. Its purpose is to provide for its members interment spaces in a beautifully designed and well maintained facility under professional management and to provide service in a dignified and reverent manner. Consisting of about 140 acres, its rolling terrain, winding roadways, variety of trees and colorful flowers display the sheer beauty of nature. We'll take a drive through this sacred space and stop at their Serenity Garden.
- **Drive through Historic West Market Street** on our way to our final destination.
- **Stop 5:** Hermon Woodlands is one of Johnny Appleseed Metro Parks newest attractions. Some unique features of Hermon Woodlands are not found anywhere else in the Park District including an ImagiNature Playscape and a Storybook Trail. Hermon Woodlands is also one of the first sites outside the Oak Openings Region in NW Ohio to find Oak Wilt. We'll visit ground zero and see what control efforts have been necessary to reign in this potentially devastating disease.

**12/12:30** We'll wrap today's tour with a picnic lunch. Bring lunch and lawn chairs/blanket in case the shelter houses are full. Plan to explore more of the park after lunch. Wear your walking shoes! The place is a beauty.





## Trees Working for Us

Champion Trees, Commercial Districts, & Water Management

August 19, 2021

## WHAT WE'LL SEE

*Start at Findlay's Historic Riverside Park - End at Historic Columbus Grove Municipal Pool*

[Click Here for Link to Tour Booklet](#)

**8:30-9:10** Arrive anytime at Riverside Park - 231 McMannis, Findlay - Park in lot north of pool

- **Get some cardio in or take a slow walk through Riverside Park:** Originally opened in 1906, RP has the notoriety of being Hancock County's oldest park. Situated along the Blanchard River, it's a favorite place for families, community gatherings, and all different types of recreation. Enjoy its cooling tree canopy and views of the Blanchard River.

**9:15-9:25** Gather in the shelter east of parking lot for a brief welcome, review maps, and cover the day's logistics

**9:30** Hit the Road!

- **Stop 1:** United State's largest hackberry tree. Group picture.
- **Stop 2:** Findlay boasts Ohio's first [Silva Cell](#) installation and one of the largest Silva Cell installations in the state. We'll take a short walk downtown to see both locations and enjoy a little bit of downtown.
- **Drive along the Blanchard River.** It's a pretty drive. If we have time we'll make some stops.
- **Stop 3:** Stretch with a short walk over the pedestrian bridge in Gilboa. Nice view of the Blanchard River & riparian zone.
- **Stop 4:** The Village of Ottawa has worked hard to reduce flooding from the Blanchard River - primarily by creating quality space for the water to flow. In 1995, the Village removed many homes that repeatedly flooded and received a grant from the US Forest Service to reforest the former residential lots. Ottawa utilized conservation stock - larger trees grown from seed for conservation use - and they are filling in nicely.
- **Stop 5:** Former Ohio Big Tree Champion Baldcypress in Columbus Grove. It's a beauty!
- **Stop 6:** Listed on the National Register of Historic Places, the Columbus Grove Municipal Pool is unlike any pool you've ever seen. The construction of Putnam County's first public swimming pool helped Columbus Grove weather the Great Depression. President Roosevelt's Works Progress Administration (WPA) and Columbus Grove planned the pool to provide much-needed jobs and recreational facilities for Putnam County residents. The pool & shelter house were built by hand from rock quarried on site by untrained stone masons/cutters in a simplified Norman Revival/Rustic architectural style. Its unique design is flanked by the Cranberry Creek (Blanchard River tributary) and a large pond surrounded by trees.

**12:30/1:00** We'll finish with a picnic lunch (bring your own) together in the shelter house. Feel free to go swimming or explore more of the park or Columbus Grove after lunch.